



The Shevington Federation

Year 6: Museum of Long-Term Knowledge

MEZZANINE

The Music Lounge (*Music*)

- Mambo: Rhythm & Pulse
- Ukulele: Blues & Improvising
- Composition: Song Writing

The Gallery (*Art*)

- Visual Art – Shadow Puppets
- Exploring Identity – drawing collage & sketchbooks
- Print and Activism – paper, pen & paint

THE LOBBY

The Gift Shop (*Trips & Enrichment*)

- MOSI/Panto
- Whitby Residential/Local Area
- International Slavery Museum

GROUND LEVEL

The Reflection Room (*RE*)

- **Christianity** (God) How do Christians mark the 'turning points' on the journey of life? **Hindu** (Dharma) – Is there one journey or many?
- **Islam** What is Hajj and why is it important to Muslims? **Christianity** (Jesus) Why do Christians believe Good Friday is good?
- **Buddhism** What do we mean by a good life? **Christianity** (Church) Is life like a journey: What's the destination?

The Room of Wellbeing (*PSHE*)

- Families & Relationships/Health & Wellbeing
- Citizenship
- Economic Wellbeing/Safety & the changing body

OUTSIDE

The Garden (*Outdoor Opportunities*)

- Local woodland & countryside, school fields

Active Space (*PE*)

- Invasion Games: Tactics / Gymnastics: Sequences
- Invasion Games: Skills & accuracy/Dance character
- Net/Field Games/ Athletics



LEVEL 3

Around the World (*Geography*)

- Energy & Sustainability/Digimaps: Recreation
- Population/ Digimaps: Urbanisation
- Globalisation

Artefact Collections (*History*)

- The Victorians & The Industrial Revolution
- 20th Century Conflict WW1/WW2
- The Civil Rights Movement

Significant People (*Past & Present*)

- Charles Darwin/ Queen Victoria
- Sir Nicholas Winton
- Harriet Tubman

LEVEL 2

Global Connections (*MFL*)

- Daily Routine
- Days Out
- Careers

The Library (*Class Readers*)

- Street Child/Moth/The Graveyard Book
- Letters from the Lighthouse/When the Sky Falls
- Rooftoppers/There's a Boy in the Girls Bathroom

Philosophical Exhibit (*Extended Writing*)

- 'The most important changes between 1750-1900 were political'. To what extent do you agree with this statement?
- 'The outbreak of war was inevitable' Do you agree with this statement?
- 'Civil disobedience was more important than legal decisions during the civil rights movement.' Do you agree?

LEVEL 1

The Research Lab (*Science*)

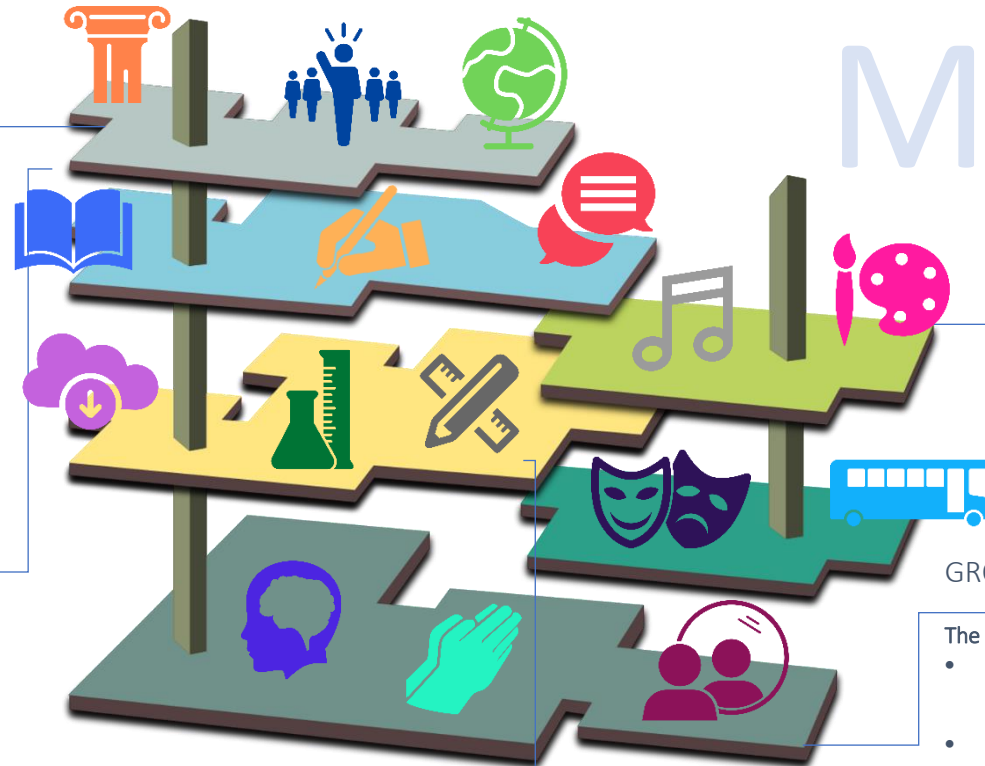
- Light/Evolution & Inheritance
- Electricity
- Living Things & Their Habitats/Animals including Humans

Meet the Maker (*DT*)

- Textiles: Waistcoats
- Electrical Systems: Steady Hand Game
- Cooking and Nutrition: Come dine with me

Technology Expo (*Computing*)

- Creating Media: Webpage Creation
- Programming A: Variables in Games
- Creating Media: 3D Modelling



3

2

1

M

G

O