



The Shevington Federation

Year 3: Museum of Long-Term Knowledge

MEZZANINE

The Music Lounge (*Music*)

- Percussion

The Gallery (*Art*)

- Drawing skills
- Collage and digital media
- Clay sculpture

THE LOBBY

The Gift Shop (*Trips & Enrichment*)

GROUND LEVEL

The Reflection Room (*RE*)

- Sacred books and festivals of light
- Christianity
- Worship and religious leaders

The Room of Wellbeing (*PSHE*)

- Families and relationships
- Health and wellbeing
- Citizenship
- Economic wellbeing
- Safety and the changing body

OUTSIDE

The Garden (*Outdoor Opportunities*)

- Train station, local woodland & countryside, school fields

Active Space (*PE*)

- Gymnastics/Invasion games
- Dance/ Athletics
- Outdoor adventure/ Striking and fielding



LEVEL 3

Around the World (*Geography*)

- United Kingdom and coastlines
- Water, weather and climate
- Europe

Artefact Collections (*History*)

- The Prehistoric Britain
- Ancient Egyptians
- Ancient Greece

Significant People (*Past & Present*)

- Alexander the Great
- Mary Anning
- Lauren Child

LEVEL 2

Global Connections (*MFL*)

- All about me
- Me and my family
- Clothes and weather

The Library (*Class Readers*)

- The House with the Chicken Legs/Bubble Boy
- How to skin a bear

Philosophical Exhibit (*Extended Writing*)

- Have invasions benefitted civilisations?
- Was the stone age really so bad?

LEVEL 1

The Research Lab (*Science*)

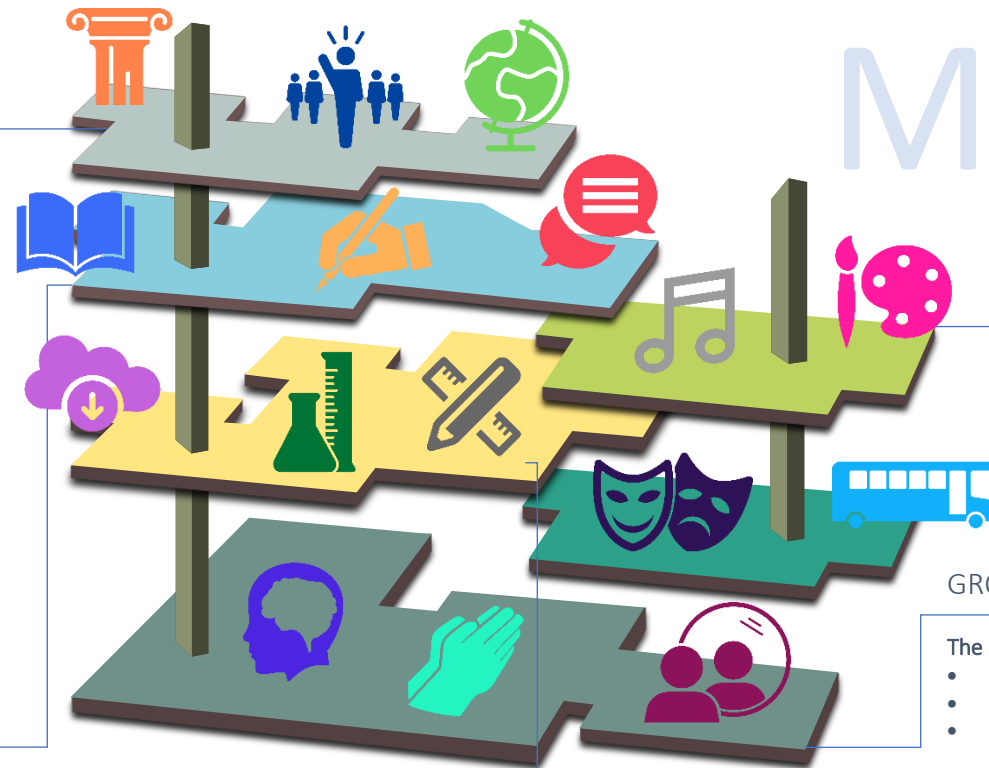
- Rocks, Forces and Magnets
- Animals including humans
- Plants and light

Meet the Maker (*DT*)

- Structures- Constructing a castle
- Textiles- Cross-stitch and applique
- Cooking and Nutrition

Technology Expo (*Computing*)

- Creating Media- Stop frame animations and desktop publishing.
- Programming A – Sequencing and sounds
- Programming B and Data/Information



3

2

1

M

L

G

O