



The Shevington Federation

# Year 1 Museum of Long-Term Knowledge

## LEVEL 3

# 3

**Around the World (Geography)**  
London in the United Kingdom  
Seven Continents  
Oceans and Seas

**Artefact Collections (History)**  
Why do we celebrate bonfire fire?  
How do we celebrate Remembrance Day?  
What was the race for space?  
How have people's lives changed in living memory?

**Significant People (Past & Present)**  
Guy Fawkes  
Neil Armstrong  
The Beatles

## LEVEL 2

# 2

**The Library (Class Readers)**

**Philosophical Exhibit (Extended Writing)**  
Are all celebrations happy?  
What makes us human?  
What things change over time?

## LEVEL 1

# 1

**The Research Lab (Science)**

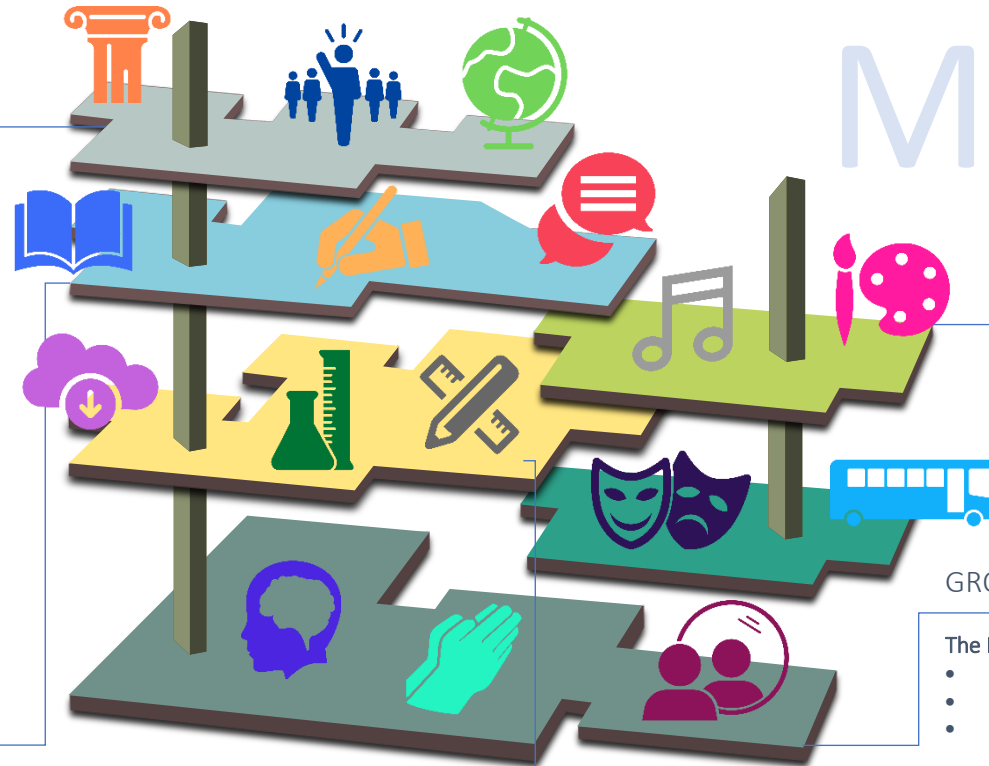
- Seasonal Changes
- Everyday Materials
- Animals, including humans
- Plants

**Meet the Maker (DT)**

- Textiles- Puppets
- Mechanisms- Moon Buggy
- Cooking and Nutrition \_fruit and vegetables

**Technology Expo (Computing)**

- Creating Media- Digital Painting
- Creating Media- Robot Algorithms
- Data and Information
- Programming - Moving a Robot
- Programming- Programming Animations



- Finding your singing voice/ playing in Time
- High and Low/BBC No place like Home
- Weather-Graphic Scores/ Traditional Scales Time

**The Gallery (Art)**

- Drawing in different media
- Painting, textile, collage
- 3D Sculpture

## THE LOBBY

**The Gift Shop (Trips & Enrichment)**  
Shevington War Memorial/ Local Church  
Knowsley Safari Park  
RHS Bridgewater

## GROUND LEVEL

**The Reflection Room (RE)**

- Part of a Jewish Family/Christians Celebrating Christmas
- Christian Beliefs/ Christians Celebrating Easter
- Stories about Jesus/ Belonging

**The Room of Wellbeing (PSHE)**

- Families and Relationships/Health and Wellbeing
- Citizenship
- Economic Wellbeing/Safety and the changing body

## OUTSIDE

**The Garden (Outdoor Opportunities)**

**Active Space (PE)**

- Multi-skills/ Gymnastics
- Dance/Gymnastics
- Team Games

