



The Shevington Federation

# Year 1 Museum of Long-Term Knowledge

## MEZZANINE

### The Music Lounge (Music)

- Finding your singing voice/Playing in Time
- High and Low/BBC No place like Home
- Weather-Graphic Scores/ Traditional Scales Time

### The Gallery (Art)

- Drawing in different media
- Painting, textile, collage
- 3D Sculpture

## THE LOBBY

### The Gift Shop (Trips & Enrichment)

Shevington War Memorial/ Local Church  
Knowsley Safari Park  
RHS Bridgewater

## GROUND LEVEL

### The Reflection Room (RE)

Why do Christians say that God is a 'Father'?  
Why is Jesus special to Christians?  
How might beliefs about creation affect how they treat the world?  
Why might some people put their trust in God?  
What do Hindus believe about God?  
How might some people show that they 'belong' to God?

### The Room of Wellbeing (PSHE)

Families and Relationships/Health and Wellbeing  
Citizenship  
Economic Wellbeing/Safety and the changing body

## OUTSIDE

### The Garden (Outdoor Opportunities)

### Active Space (PE)

- Multi-skills/ Gymnastics
- Dance/Gymnastics
- Team Games



## LEVEL 3

### Around the World (Geography)

London in the United Kingdom  
Seven Continents  
Oceans and Seas

### Artefact Collections (History)

Why do we celebrate bonfire fire?  
How do we celebrate Remembrance Day?  
What was the race for space?  
How have people's lives changed in living memory?

### Significant People (Past & Present)

Guy Fawkes  
Neil Armstrong  
The Beatles

## LEVEL 2

### The Library (Class Readers)

### Philosophical Exhibit (Extended Writing)

Are all celebrations happy?  
What makes us human?  
What things change over time?

## LEVEL 1

### The Research Lab (Science)

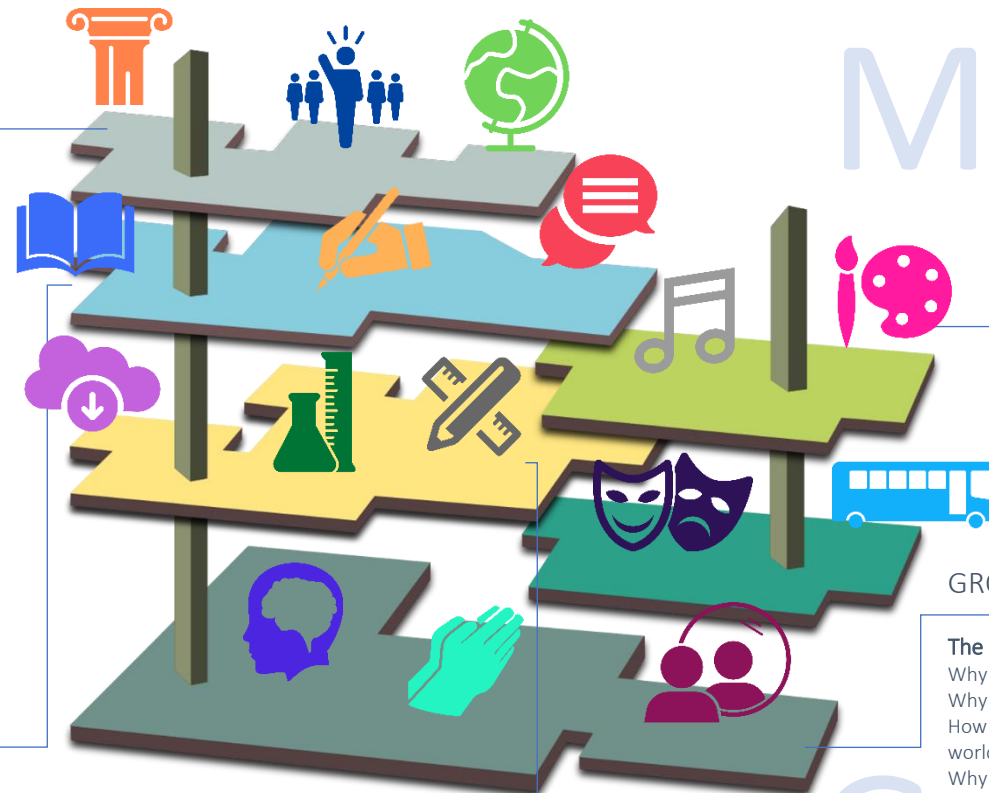
- Seasonal Changes
- Everyday Materials
- Animals, including humans
- Plants

### Meet the Maker (DT)

- Textiles- Puppets
- Mechanisms- Moon Buggy
- Cooking and Nutrition \_fruit and vegetables

### Technology Expo (Computing)

- Create text, paintings and animations
- Program a robot and characters on screen
- Internet Safety
- Digital Devices



3

2

1